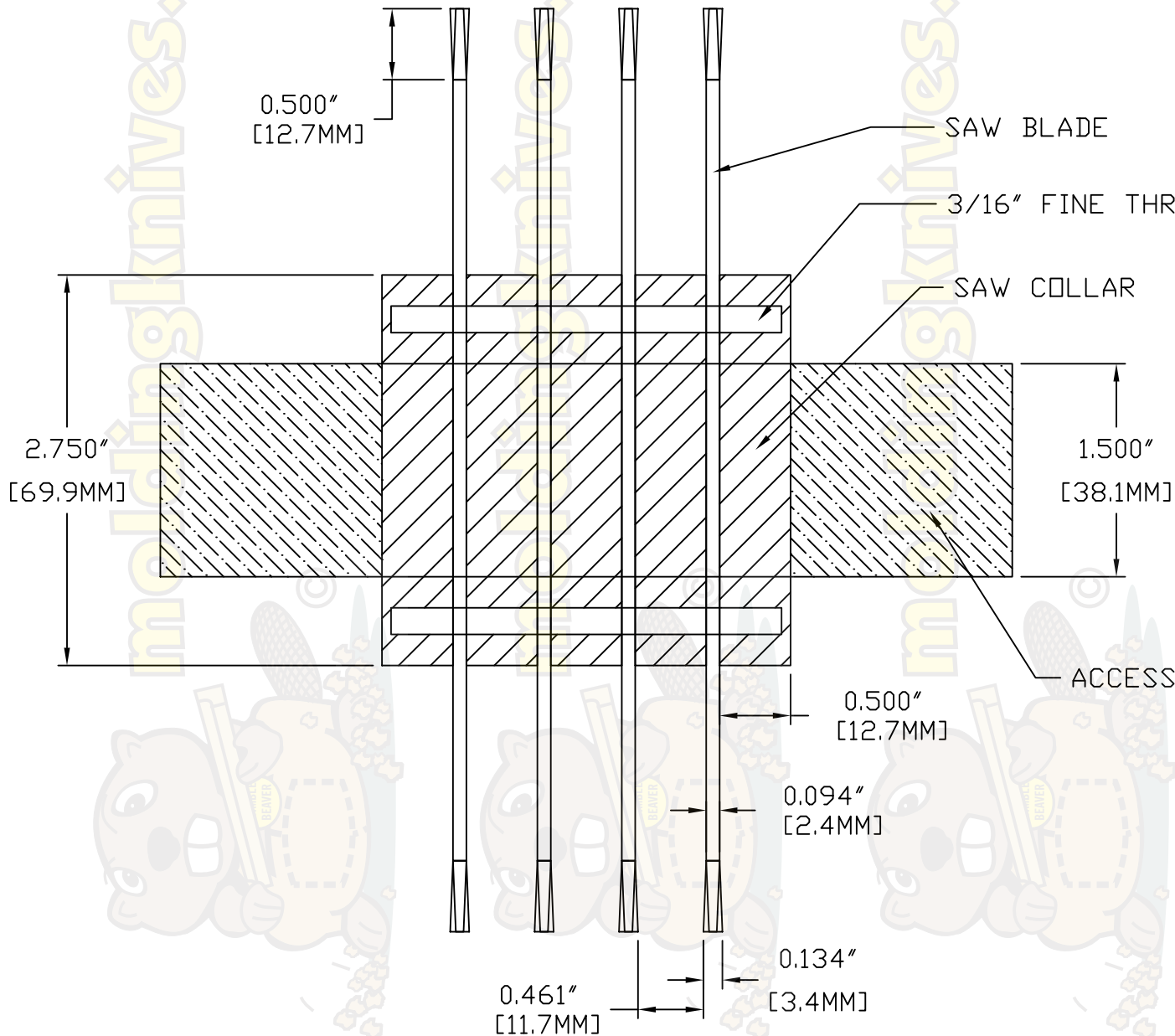


GANG SAW SETUP ON THE WOODMASTER



USE MACHINE WASHERS TO EITHER ADD WIDTH TO THE COLLARS OR INSTEAD OF COLLARS TO REDUCE WIDTH.

KEEP KERF IN MIND WHEN CALCULATING MEASUREMENTS!

USE MACHINE WASHERS (NOT REGULAR WASHERS) FOR ACCURACY.